

# What's in your Tilly plan

**Tilly**

TillyDesign.com



These are just a few samples of our

# Planting Plans

Your designer will create a detailed bird's eye view of your new yard so you know exactly where your garden beds, lawn, privacy hedges and all other recommended features and plantings will go!

*Planting plans include a scaled plan of your hardscape elements including decking, patios, walkways, driveways and built site features.*



# This is a Plant Schedule

Your plant shopping list! The botanical name, common name, quantity and sizing of the plants to complete your yard.

*Did you know that you can order your plants below retail through Tilly and they'll arrive at your front door? That's right - ask us about it!*

## PLANT SCHEDULE

QTY	BOTANICAL NAME	COMMON NAME	SIZE
<b>TREES</b>			
3	Amelanchier arborea	Downy Serviceberry	6-7'
3	Betula pendula (multi-stem)	Silver Birch	8-10'
<b>SHRUBS</b>			
9	Buxus 'Green Mountain'	Green Mountain Boxwood	24-30"
20	Buxus microphylla 'Green Gem'	Green Gem Boxwood	3 Gallon
13	Hydrangea quercifolia	Oakleaf Hydrangea	5 Gallon
4	Ilex verticillata	Winterberry	5 Gallon
1	Sambucus nigra 'Black Lace'	Black Lace Elderberry	7 Gallon
<b>PERENNIALS</b>			
22	Calamintha nepeta	Lesser Calamint	1 Gallon
24	Echinacea pallida	Pale Purple Coneflower	1 Gallon
32	Hosta 'Halcyon'	'Halcyon' Hosta	1 Gallon
19	Tiarella cordifolia	Foamflower	1 Gallon
<b>GRASSES</b>			
104	Carex pennsylvanica	Pennsylvania Sedge	1 Gallon
31	Sesleria autumnalis	Autumn Moor Grass	1 Gallon
<b>GROUNDCOVER</b>			
54	Gallium odoratum	Sweet Woodruff	Plugs
430	Pachysandra terminalis	Japanese Pachysandra	Plugs



**What if my local nursery doesn't have a plant?** Nurseries vary a lot in stock and availability so it is not uncommon to need substitutes. The salesperson at your local nursery can help suggest a substitute that they have in stock or please reach out to Tilly for a suggestion. Substitutions are a great way to avoid having to go to multiple nurseries.

**Tilly**

**Tilly**



VIEW OF FIREPIT & LOUNGE SEATING



VIEW OF OUTDOOR KITCHEN WITH BAR SEATING



VIEW FROM DRIVEWAY



## 3D Renders

Our most popular add-on! Visualize what a mature landscape will look like after planting!

*Beyond being pretty to look at, these are great for plant newbies, first time homeowners or anyone who learns better by seeing!*

**Tilly**

RENDERINGS

**Tilly**



WALL WASH



UPLIGHTS ON HEDGE



TREES



UPLIT ORNAMENTAL TREES



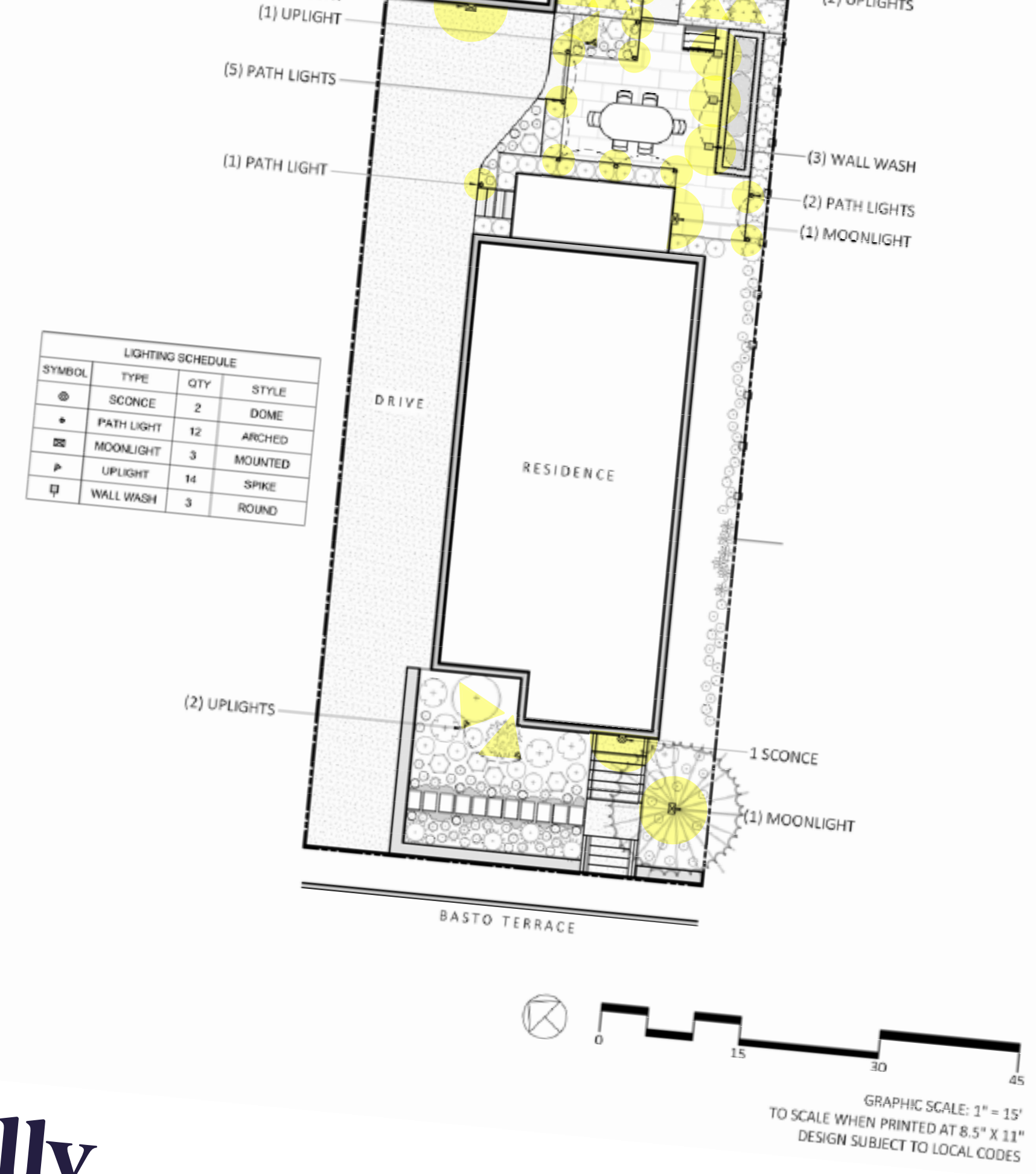
MOONLIGHT



SPIKED UPLIGHT

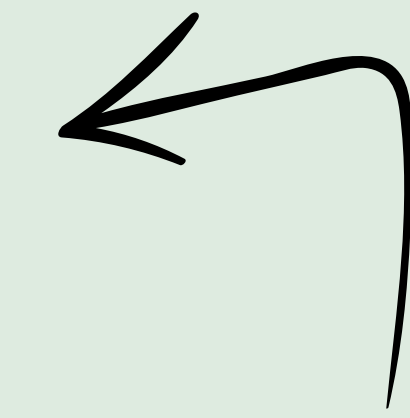


ARCHED PATH



Tilly

LIGHTING PLAN



# Lighting Plans

This popular add-on is a map of recommended exterior lighting fixtures and their placement to add ambiance and safety to your new landscape.

*Light it up! We showcase the types of fixtures that will best highlight your space - from path lights to moon lights!*

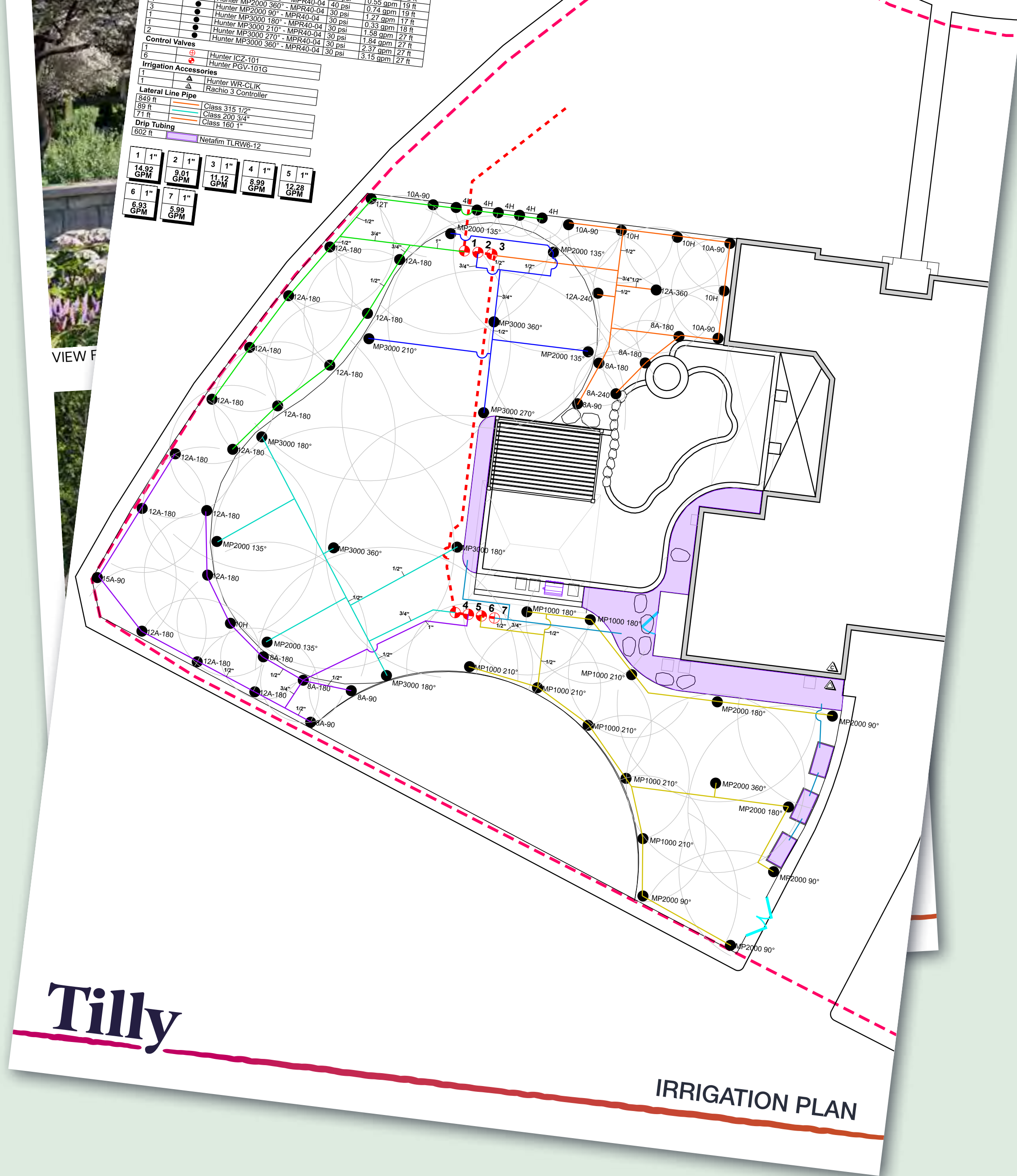
LIGHTING CONCEPT IMAGES

# Tilly

# Irrigation Plans

This add-on is a map of the irrigation needed to support your new landscape

*This is especially popular in states where water wise landscaping is critical, like Texas and California!*



# Inspiration Images

Our plans include images of each recommended plant as well as conceptual images of hardscape materials and site features to help interpret your design. No need to waste time Googling!

*Tip: Print out your plan and bring it along as a reference to the garden center.*



MODERN RECTANGULAR PLANTER BOXES



MODERN SCREEN



ASPHALT DRIVEWAY WITH FLUSH CONCRETE CURB



RECTANGULAR CONCRETE PAVERS SET IN GRASS



RECTANGULAR UNIT PAVERS



Buxus 'Green Mountain'



Sambucus nigra 'Black Lace'



Pachysandra terminalis



Hosta 'Halcyon'



Buxus 'Green Gem'



Echinacea pallida



Sesleria autumnalis



Calamintha nepeta

**Tilly**

PLANT IMAGES

**Tilly**

MATERIAL CONCEPT IMAGES

**Tilly**

# Designer Letter and Installation Guide

Your Tilly plan includes a note from your designer introducing your new yard and explaining major design choices and priorities.

*Also included are instructions to assist you with installation and maintenance practices - these are helpful whether you DIY or hand your plans off to a contractor!*

Tilly

Tilly

February 7, 2022

## YOST RESIDENCE

PEARL RIVER, NEW YORK

Dear Blythe,

I am excited to introduce you to your new landscape design. While working through our call and the space assessment you submitted to determine goals for the space, my vision to life. The overall goal is to unify the three properties and provide seasonal interest in the front, side and rear yards.

### The following items shaped and informed my design choices:

- 1. Solution for ROW trees:** On our call we discussed the possibility of having a concrete space in the parkway but decided on an updated barrier instead. I have proposed a stone wall with a few different options for edge restraint. This will be an elegant yet functional solution.
  - 2. Privacy:** A new fence establishes a buffer between the west side of your home and the property. Along the north side of your yard, evergreen shrubs create a sense of enclosing additional privacy.
  - 3. Outdoor Dining:** Your new patio area features an outdoor kitchen with counter seating and enclosure visually integrates your existing smokers. There is also ample space for a dining table and seating for 10.
  - 4. Year-round Interest:** I have specified a variety of perennials that bloom at different times of the year as ornamental grasses that provide interesting texture through the winter. Evergreens, which have their leaves year-round, are placed along the façade and throughout the yard.
  - 5. Water-Efficient:** All the plants specified are well suited for Pearl River's climate and water conditions. Irrigation is always recommended for the first three growing seasons to establish the plants.
  - 6. Classic Style:** Plants such as Boxwoods, Hydrangea, and Astilbe have been proposed along the façade to achieve a classic aesthetic.
  - 7. Maintenance:** Any outdoor space will require some maintenance. This design will require less maintenance but no more than a typical residential landscape in the area.
  - 8. Budget:** We discussed on our call that you would prefer to focus on getting a full and complete design than feel restrained by budget. This plan can be phased, or quantities and sizes of plants can be reduced in order to reduce cost if need be.
- I very much enjoyed working with you and I hope you love your design!

Best Regards,  
Brett

Before you put a shovel in the ground, consider the following:

- Who is doing the work? You, someone in your family, or an outside contractor?
- Who will be supplying the plants? Plant material is both expensive and cumbersome to move. You will likely need a large truck to bring the material to your house.
- Where do the utilities run into the house? Digging holes may disrupt existing lines. Call 811 or have your contractor call at least two weeks prior to installation. It's a free call and all your utilities within the described work area will be located and flagged.

### FIRST STEPS:

- 1. Demo:** Remove any existing plants that are no longer compatible with the design vision.
  - With most plants, just removing the primary stems and roots will suffice to eliminate them.
  - In some rare cases (bamboo, Japanese knotweed...) it will take time and effort. Drop us a note if you have any stubborn weeds and Tilly will provide additional advice.
- 2. Transplanting:** Are there some great elements that are remaining in your new design? Dig around these carefully (about 1 foot out from the center for every 2 feet of plant height) and set them aside in the SHADE until you're ready to use them.
  - If they will be sitting for more than 48 hours, the root balls should be wrapped in burlap. The faster you can get them to their new homes, the better.
  - Water immediately upon replanting and then put the transplants on the same regimen at the rest of your new garden.
- 3. Raking:** Level out the area to be planted. You will need to layout the new plants in their future locations before actually planting. This is almost impossible to do if the soil surface is uneven.
- 4. Soil Amendments:** This is a HUGE grey area. Every landscaper, gardener, and landscape architect will offer different (and often conflicting!) advice.
  - At Tilly we sing the praises of compost. We believe it is always better to improve the soils you have than bring in (foreign) topsoil that will not mesh well with your existing conditions.
  - In a perfect world you will spread 2-4" of compost across the entire planting area and till into the soil to a depth of 12-18". Honestly, so long as you can get SOME compost onto the area and backfill your plants with a mix of compost and soil you'll be in good shape. If you want more on soil amendments give us a shout.

### PLANTING:

- 1. Layout:** Try to have all of the plants on site if you can. Set them out in the garden in their approximate locations, and then stand back. Does that dogwood encroach too closely on a window? Is that hydrangea little too far away from its neighbors? Is there a better "face" for that tree? Make the necessary adjustments...now is the time! This is much harder once the material is in the ground.
- 2. Planting:**
  - ◊ Trees:
    - Dig a hole that's twice as wide as the pot or root ball but NO deeper. In fact, you should consider planting your tree above the soil 6-8" initially (more later about root flares...)
    - For balled-and-burlapped trees (preferred!), unwrap the burlap from the trunk and peel at least halfway down the root ball. Cut and peel back at least half of any wire baskets - remove wire completely if possible. Straighten tree (try not to pull on the trunk, straighten by shifting the root ball) and backfill hole with existing soil mixed with compost.
    - If the tree is potted (less preferable), loosen the soil around the roots, especially if they are up near the trunk and/or tightly running in circles, then place the tree into the planting hole and treat as above.
    - Water immediately. Best to put a hose near the trunk and turn on to a slow dribble for about 30 minutes depending on the size of the tree.
  - ◊ Shrubs:
    - Plant shrubs in a hole that's about twice the diameter of the root ball. The top of the root ball should be slightly above the surrounding soil level.
    - Backfill hole with existing soil mixed with compost
    - Water at the shrub's base immediately with a slowly running hose for about 20 minutes.
  - ◊ Perennials:
    - Set these plants in soil at the same level they were growing in the pot.
    - Firm the soil around each plant with your hands, then water thoroughly.
  - ◊ Annuals:
    - Set out and dig in so soil levels are equal.
    - Firm soil around each plant and water.
    - There are a number of different planting methods for bulbs depending on the desired effect. We are big fans of "Top Planting" and "Slice and Toss" - both advocate minimal planting depths (2-3" than as noted on the bulb packaging), and no consideration for bulb orientation.
    - Drop us a note for more info on bulb planting.

Tilly

INST



# Tilly

Professional Landscape Design. All Online.

[TillyDesign.com](https://TillyDesign.com)

 [@tilly\\_design](https://www.instagram.com/tilly_design)